

Tuesday, March 20, 2012

Outing Name: Moon Prairie Road

Rating: Easy

Location: south side Dead Indian Memorial Rd. at milepost 22

Outing Distance: 5 miles

Starting Elevation: 4839 feet

Elevation Change: very little

Estimated Tour Duration: 2 ½ hours

Type: Out and Back

Driving Distance & Travel Time: from Ashland: approximately 25 miles

Driving Donation: medium / \$10.00

Trailhead Location: Deadwood (Big Elk) Sno-Park

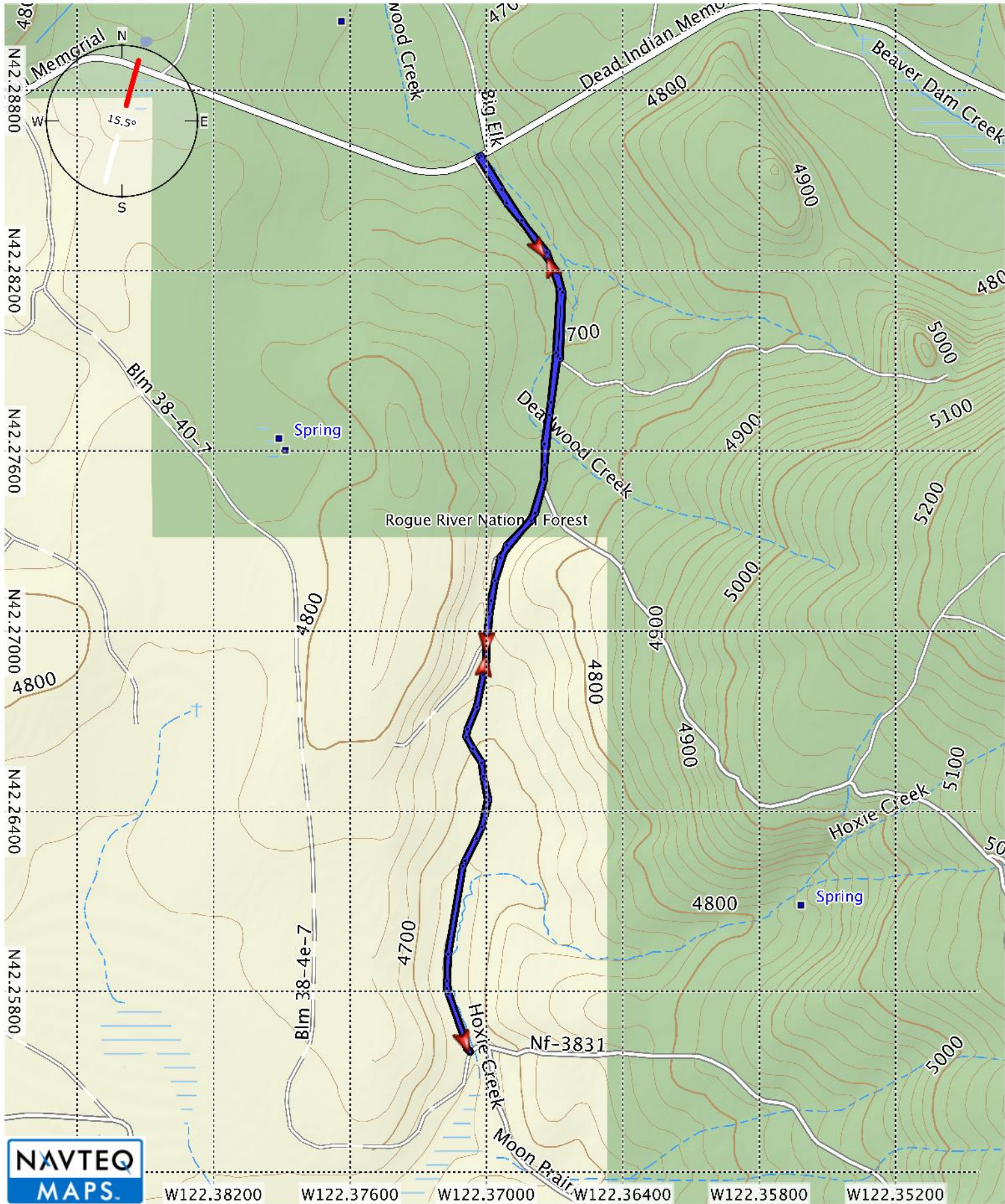
Trail Markings: mostly unmarked except for one or two Multi-use (orange diamonds)

Trail Description: roadway 100%

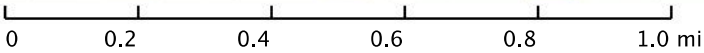
Maps: BLM & USFS Jackson-Klamath Winter Trails Guide

Course Description: From sno-park, walk across Dead Indian Memorial Rd and go a bit west to the two large posts that mark the beginning of road. Go 2 ½ miles, then return. Terrain is gently rolling. At mile 1.25 there is a gate and cattle guard, go thru and continue. At mile 1.5, stay left at intersection marked with orange diamond. At mile 2.5 there is a "T" intersection which is the turn-around point.

Special Considerations: Road is a multi-use trail which goes over a mixture of private and public land (BLM). It begins as a public easement across private land.



Topo U.S. 24K West
 © 2008 NAVTEQ. All Rights Reserved. ©
 Garmin Ltd. or its Subsidiaries
 1995-2009.



Moon Prairie road

